



sailmelbourne

**13 -17 JANUARY
2022**



Sailing Instructions

Incorporates the 2022 Australian Para Championships, 2022 Australian WindFoil Championships, 2022 Victorian KiteFoil Championships, Victorian stage of the National KiteFoil Series and 2022 Inaugural Australian Wing Foil Championships.

Host Venue Royal Brighton Yacht Club and Royal Yacht Club of Victoria

Organising Authority: Royal Brighton Yacht Club (RBYC) and Royal Yacht Club of Victoria (RYCV).

With support from Victorian partner clubs:

Black Rock Yacht Club, Mordialloc Sailing Club and Hobson's Bay Yacht Club

COVID-19 Note: Competitors and coaches must be fully vaccinated in order to access areas the event organisers have control over – such as clubhouses, changerooms and rigging areas.

1 RULES

- 1.1 The regatta will be governed by the rules as defined in the Racing Rules of Sailing (RRS).
- 1.2 The Australian Sailing Special Regulations, Part 2 Off the Beach Boats will apply.
- 1.3 RRS Appendix P – Special Procedures for RRS 42 will apply as changed by SI's 15.1 and 15.3.
- 1.4 RRS Appendix T – Arbitration will apply.

2 CHANGES TO SAILING INSTRUCTIONS

- 2.1 Changes to the format or schedule of races will be posted on the [Official Notice Board www.sailmelbourne.com.au](http://www.sailmelbourne.com.au) by 20:00 hrs on the day before it will take effect and any change to the sailing instructions will be posted before 09:00 hrs on the day it will take effect.
- 2.2 Any reassignment of classes to course areas will be posted before 09:00 hrs on the day it will take effect, or if flag AP is displayed ashore, 30 minutes before flag AP for that class is removed.
- 2.3 When any SI Addendum is changed, an updated version of it will be posted on the Official Notice Board.

3 COMMUNICATION TO COMPETITORS

The official Sail Melbourne International notice board will be an online notice board located at www.sailmelbourne.com.au. All protests, scoring enquiries, equipment and crew change requests will be submitted via the online notice board and resulting notices posted online.

4 SIGNALS MADE ASHORE

- 4.1 Signals made ashore will be displayed at the flag masts at Royal Brighton Yacht Club and Royal Yacht Club of Victoria boat park.
- 4.2 When flag AP is displayed ashore, '1 minute' is replaced with 'not less than 30 minutes' in the race signal AP. This changes race signal AP.
- 4.3 **[DP]** Flag AP over H displayed ashore means 'Boats shall not leave the harbour. Wait for further instructions.' This adds to Race Signals.
- 4.4 Signals made Ashore will be posted on the [Official Notice Board](http://www.sailmelbourne.com.au)

5 [DP] CODE OF CONDUCT

Competitors and support persons shall comply with reasonable requests from race officials.

6 SCHEDULE OF RACES

- 6.1 The total number of races scheduled is as per the Event Schedule NOR Attachment A:
- 6.2 The daily race schedule and the scheduled time of the warning signal for the first race is shown in SI Addendum B.
- 6.3 The warning signal for each succeeding race will be made as soon as practicable after the completion of the previous race.
- 6.4 To alert boats that a race or sequence of races will begin soon, the orange starting line flag will be displayed with one sound for at least five minutes before a warning signal is displayed. This changes RRS Race Signals.
- 6.5 No warning signal will be made after 1600 on 17 January 2022.

7 FORMAT OF RACING

The format is a Single Series. If the race committee deems it necessary to split a class into fleets, then separate instructions will be issued.

8 RACING AREAS

See SI Addendum A.

9 CLASS FLAGS

See SI Addendum D

10 THE COURSES

- 10.1 The diagrams in SI Addendum D show the courses, the course designations, the approximate angles between legs, the order in which marks are to be passed, and the side on which each mark is to be left.
- 10.2 No later than the warning signal, the race committee signal vessel will display the course designation and the approximate compass bearing of the first leg.
- 10.3 If one of the gates marks is not laid, then the laid mark shall be left to port.

11 MARKS

See SI Addendum D.

12 THE START

- 12.1 Some Class fleets may be started together.
- 12.2 The starting line will be between a staff displaying an orange flag on the race committee vessel at the starboard end and either:
 - (a) the course side of the port-end inflatable starting mark, or
 - (b) a staff displaying an orange flag on the race committee vessel at the port end.
- 12.3 **[DP]** A buoy may be attached to the race committee starting vessel. Boats shall not pass between this buoy and the race committee starting vessel at any time.
- 12.4 **[DP]** Boats whose warning signal has not been made shall avoid the starting area during the starting sequence for other classes. The starting area is defined as a rectangle 50 meters from the starting line and marks in all directions.
- 12.5 A boat that does not start within 4 minutes after her starting signal will be scored Did Not Start without a hearing. This changes RRS 35, Appendix A5.1 and Appendix A5.2.

13 CHANGE OF THE NEXT LEG OF THE COURSE

To change the next leg of the course, the race committee will lay a new mark (or move the gate or move the finishing line) and remove the original mark as soon as practicable. When in a subsequent change a new mark is replaced, it will be replaced by an original mark.

14 THE FINISH

The finishing line will be between a staff displaying a Blue flag on the race committee vessel and either:

- (a) the course side of the nearby inflatable finishing mark, or
- (b) a staff displaying a Blue flag on the nearby race committee vessel.
- (c) **WingFoil** only, when the leading boat completes the course and finishes, the Race Committee signal boat at the finish will immediately display code flag F with a sound signal. The F flag will be removed at the end of the finishing window time limit. When the leading boat completes the course and finishes, all boats that cross the finishing line within the finishing window time after the leading boat has finished shall be deemed to have finished irrespective of the number of laps completed. Their position in the race will be taken from their finishing order and the number of laps completed with those having the most laps finishing ahead of those with fewer laps. This changes RRS 28.1 and A4.

15 PENALTY SYSTEM

- 15.1 For the 49er, 49er FX, 29er, WindFoil, Techno, Hansa 303 and Liberty classes, RRS 44.1 and RRS P2.1 are changed so that the Two-Turns Penalty is replaced by the One-Turn Penalty.
- 15.2 RRS Appendix P will apply as changed by Instructions 15.1 and 15.3.
- 15.3 RRS P2.3 will not apply and RRS P2.2 is changed so that it will apply to any penalty after the first penalty.
- 15.4 **[NP]** Breaches of rules in the SIs will not be grounds for a protest by a boat. This changes RRS 60.1 (a).
- 15.5 **[SP]** For breaches of the SIs the race committee may apply a standard penalty without a hearing. A list of these breaches and the associated standard penalties will be posted on the Official Notice Board. However, the race committee may protest a boat when they consider the standard penalty to be inappropriate. A boat that has been penalised with a standard penalty can neither be protested for the same incident by another boat nor can another boat request redress for this race committee action. This changes RRS 60.1, 63.1 and Appendix A5.

16 TIME LIMITS AND TARGET TIMES

- 16.1 See SI Addendum D.
- 16.2 If no boat has passed Mark 1 within the Mark 1 Time Limit the race may be abandoned. Failure to meet the target times will not be grounds for protest. This changes RRS62.1 (a),
- 16.3 Boats failing to finish within the time stated in the Finish Window after the first boat sails the course and finishes will be scored Did Not Finish. This changes RRS 35, Appendix A5.1 and A5.2.

17 HEARING REQUESTS

- 17.1 Australian Sailing has appointed a National Jury for this event.
- 17.2 Protests will be submitted via the online notice board.
- 17.3 For each class, the protest time limit is 60 minutes after the last boat has finished the last race of the day or the race committee signals no more racing today, whichever is the later.
- 17.4 Notices will be posted no later than 30 minutes after the protest time limit to inform competitors of hearings in which they are parties or named as witnesses. Hearings will be held at RYCV and RBYC beginning at the time posted. Hearings may be scheduled to begin up to 30 minutes before the end of protest time. Provisions will be made for Hearings to be conducted by electronic communications between the two venues.
- 17.5 Notices of protests by the race committee, technical committee or protest committee will be posted to inform boats under RRS 61.1 (b).
- 17.6 A list of boats that have been penalized under Appendix P for breaking RRS 42 will be posted.
- 17.7 On the last scheduled day of racing, a request for reopening a hearing shall be delivered
 - (a) within the protest time limit if the requesting party was informed of the decision on the previous day;
 - (b) no later than 30 minutes after the requesting party was informed of the decision on that day.This changes RRS 62.2.

18 SCORING

- 18.1 Three races are required to be completed to constitute a series
- 18.2 When fewer than five (5) races have been completed, a boat's regatta score shall be the total of her race scores.
- 18.3 When 5 or more races have been completed, a boat's regatta score will be the total of her race scores excluding her worst score.
- 18.4 Scoring for the Australian Para Championships will be drawn from the overall fleet results for the open fleets in the 2.4mR, Hansa 303 one-person, Hansa two-person and Liberty.

18.5 **WindFoiling – Slalom Racing**

- (a) All competitors will be assigned together for each slalom race.
- (b) Three slalom races are required on the one day to complete a slalom round.
- (c) Points scored in those races will determine the competitors overall place in that round. The round will be abandoned and may be re-sailed on another day if less than three races are completed on the one day.
- (d) More than one round can be completed on any day.
- (e) The scoring of one slalom round is equal to that of one course race and is treated as that when determining the competitor's overall regatta score.

19 **[NP] SAFETY REGULATIONS**

- 19.1 **[SP]** Competitors shall wear personal flotation devices at all times while afloat, except briefly while changing or adjusting clothing or personal equipment.
- 19.2 Numbered bibs will be provided by the organising authority for the WingFoil and Kite competition. Bibs shall be collected from the Race Management Representative at the Beach, worn at all times while racing and returned to the Race Management Representative no later than 30 minutes after the last finisher in, or abandonment of, the last race of the regatta.
- 19.3 Boats not leaving the harbour for a scheduled race shall promptly use the electronic sign on/off system by selecting "**Not Sailing Today**".
- 19.4 **[SP]** Before leaving to race on each scheduled racing day, a crew shall sign-on electronically using the online sign on/off system.
- 19.5 **[SP]** After returning to shore on each scheduled racing day, a crew shall sign-off electronically using the online sign on/off system within the protest time limit.
- 19.6 Instructions for use of **electronic sign on/off system**:
 - a. Competitors shall provide a contact mobile phone number on the entry system.
 - b. Competitors will receive a text message prior to the first race containing a link to the sign on system.
 - c. Prior to leaving the shore, competitors shall click on the link, select the "Sign on/off" link in the menu and select either "Sign on" or "Not Sailing Today".
 - d. On returning to shore after racing, competitors shall click on the "Sign Off" link.
 - e. If for some reason the competitor is having issues with the sign on/of please call 0412 502 395 and the regatta office will manually sign you on/off.
- 19.7 **[DP]** A boat that retires from racing shall notify the race committee before leaving the racing area, or if that is not possible, shall notify the race office as soon as possible after returning ashore and shall complete a retirement declaration in the online notice board before the expiry of the protest time limit.
- 19.8 **[DP]** Boats shall not sail into other course areas whilst the other course areas are racing. Boats not racing shall remain clear of boats that are racing and official boats.
- 19.9 Race Management VHF Channels – See SI Addendum D.
- 19.10 **[DP]** Race officials and race committee vessels may retrieve boat crews and return them to their boats for safety reasons. The sail number of a boat which receives outside help will be notified to the Race Committee with details of the incident and a hearing may be held (if required) to determine any penalty. This changes RRS 41.

20 **[DP] [NP] REPLACEMENT OF CREW OR EQUIPMENT**

- 20.1 Substitution of competitors will not be allowed without prior written approval of the race committee via the online notice board and shall comply with any restrictions in the Notice of Race.
- 20.2 Substitution of skippers will not be allowed after close of Registration for the applicable class.
- 20.3 Substitution of damaged or lost equipment will not be allowed unless approved by the race committee. Requests for substitution shall be made to the race committee at the first reasonable opportunity via the online notice board.

20.4 When equipment is substituted during a series of races on the same day, the request shall be made before the protest time limit expires on the day via the online form.

21 [DP] [NP] EQUIPMENT AND MEASUREMENT CHECKS

21.1 Equipment may be inspected at any time for compliance with the class rules and sailing instructions. When instructed by an event equipment inspector, a boat shall proceed immediately to a designated area for inspection

22 OFFICIAL VESSELS

22.1 Official vessels will be marked as follows:

Equipment Inspection	Flag with letter M or Measurer
Judges	White Flag with letter J
Media	Flag with letters Media
Race Committee	Flag with letter referring to course team "A", "D", "E", "F" etc
Rescue	Flag with letter referring to course team, "A", "D", "E", "F" etc
VIP	Flag with letters VIP
PRO	Flag with letters PRO

22.2 Actions by official vessels, drones or helicopters shall not be grounds for requesting redress by a boat. This changes RRS 60.1 (b).

23 [DP] [NP] SUPPORT TEAMS

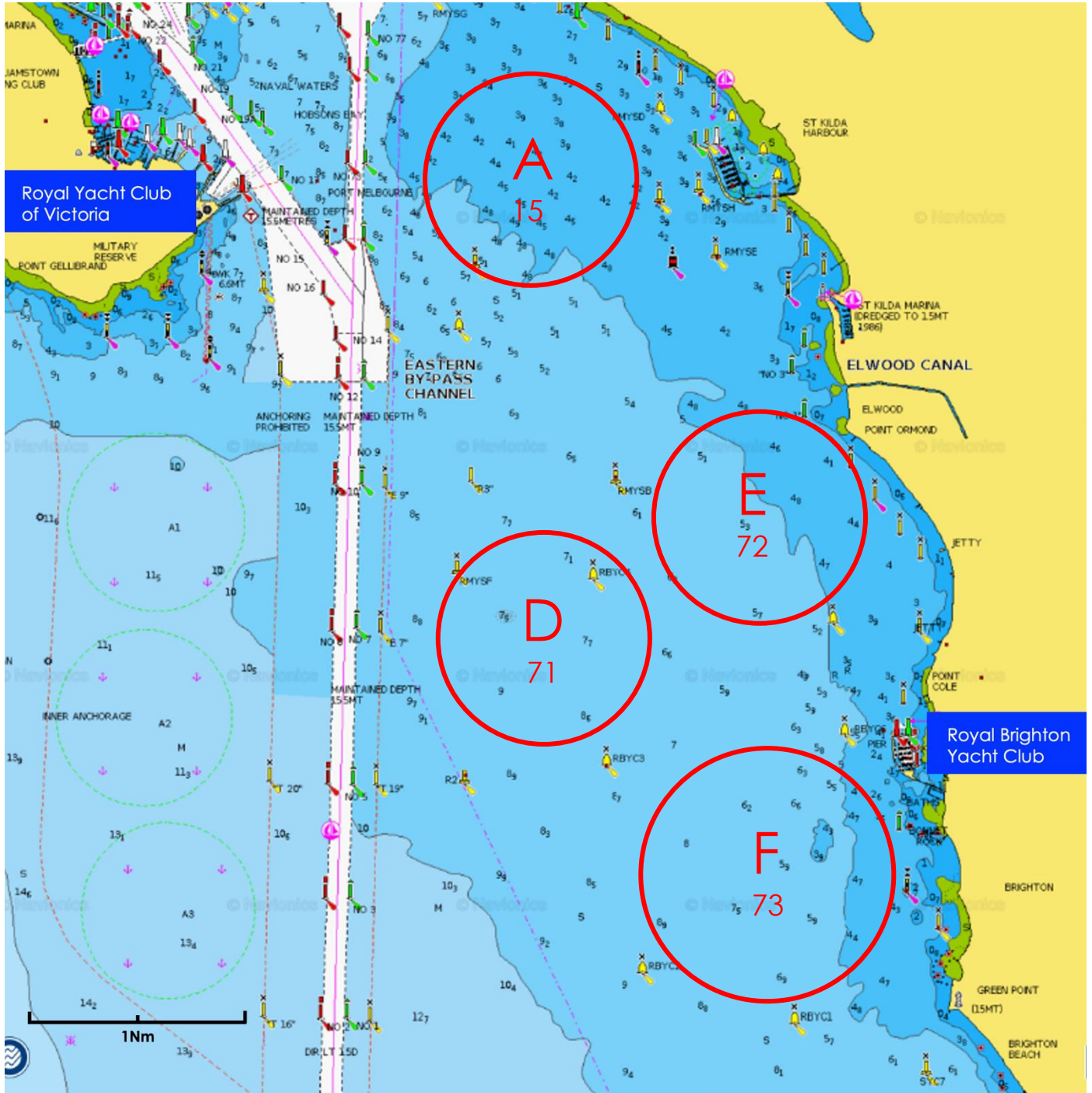
23.1 Team leaders, coaches and other support personnel shall stay a minimum of 50m outside areas where boats are racing from the time of the preparatory signal for the first class to start until all boats have finished or retired or the race committee signals a postponement, general recall or abandonment unless assistance has been requested by the race committee.

23.2 Support Vessel Regulations are detailed on the ONB.

24 [DP] PARA CLASSES HAUL OUT RESTRICTIONS

Para Classes boats shall not be hauled out during the event except with and according to the terms of prior written permission of the race committee.

COURSE AREAS



SCHEDULE OF RACES

Will be displayed on the [Official Notice Board](#)

- RMT: Race Management Team eg; Mordialloc Sailing Club (MSC)
Races: No. of races scheduled
Warning: First race of the day
Course: Location of race course – refer to SI Addendum A
for course locations

QR Code – Official Notice Board



Standard Penalties [SP]

In accordance with the general introduction to both the Notice of Race and the Sailing Instructions and SI 15.5, the Race Committee will apply the following Standard Penalties:

SI	Safety	
19.4	Failure to comply with sign on requirements – first offence	First offence four points added to the first race of the day, but no worse than DNF. Subsequent offences four points
19.5	Failure to comply with sign off requirements – first offence	First offence four points added to the last race of the day, but no worse than DNF. Subsequent offences four points

ALPHA Course – VHF 15

Classes

Class	Class Insignia	B'ground Colour	Finish Time Limit	Mark 1 Time Limit	Finish Window	Target Time
Laser Standard	Laser	White	75	20	15	50
Laser Radial	Laser	Green	75	20	15	50
Laser 4.7	Laser	Yellow	75	20	15	50

Description of Marks

Start pin	Orange buoy or race vessel
Finish pin	Blue buoy
Mark 1i	Yellow buoy
Mark 1o	Orange buoy
Mark 2i	Yellow buoy
Mark 2o	Orange buoy
Marks 3P & 3S	Orange buoy
Marks 4P & 4S	Orange buoy
Mark 5	Orange buoy

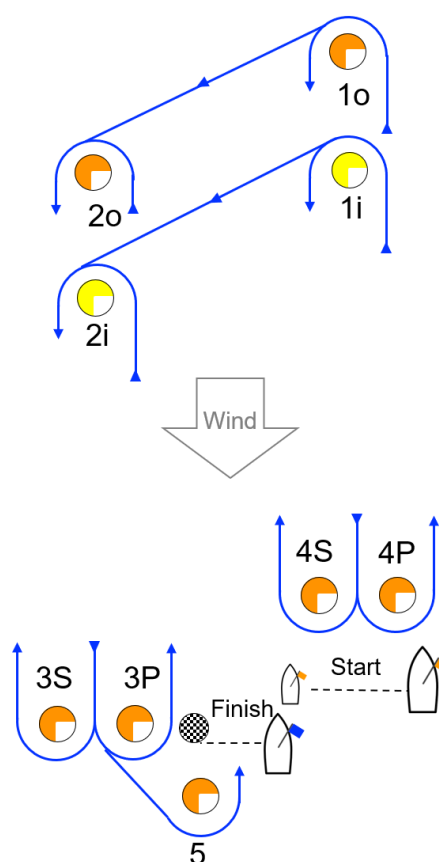
Courses

LASER 4.7

Signal	Mark Rounding order
I2	Start – 1i – 4S/4P – 1i – 2i – 3P – 5 – Finish
O2	Start – 1i – 2i – 3S/P – 2i – 3P – 5 – Finish

LASER Standard & Radial

Signal	Mark Rounding order
I2	Start – 1o – 4S/4P – 1o – 2o – 3P – 5 – Finish
O2	Start – 1o – 2o – 3S/3P – 2o – 3P – 5 – Finish



SI Addendum D

DELTA Course – VHF 71

Classes

Class	Class Insignia	B'ground Colour	Finish Time Limit	Mark 1 Time Limit	Finish Window	Target Time
49er & 49er FX/Open	49er	Blue	50	20	10	30
International 29er	29er	Red	50	20	10	30
Waszp	KA	Black	50	20	10	30

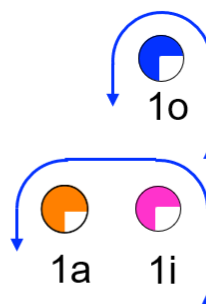
Description of Marks

		Change Mark
Start pin	Race vessel	
Finish pin	Black White check buoy	
Mark 1o – 49er/FX	Blue buoy	Blue buoy with black band
Mark 1i – 29er	Pink buoy	Pink buoy with black band
Mark 1a	Orange buoy	
Marks 4P & 4S	Blue buoy	

Courses

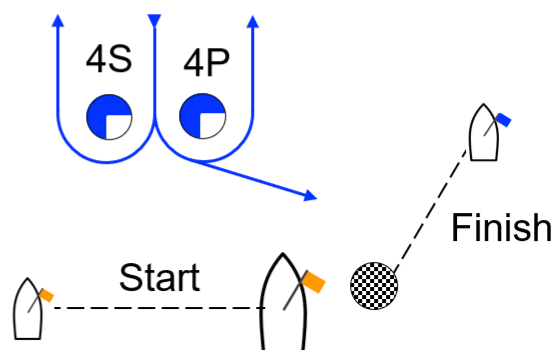
29er & Waszp

Signal	Mark Rounding order
LR2	Start – 1i – 1a – 4S/4P – 1i – 4P – Finish
LR3	Start – 1i – 1a – 4S/4P – 1i – 4S/4P – 1i – 4P – Finish



49er/FX

Signal	Mark Rounding order
LR2	Start – 1o – 4S/4P – 1o – 4P – Finish
LR3	Start – 1o – 4S/4P – 1o – 4S/4P – 1o – 4P – Finish



SI Addendum D

ECHO Course – VHF 72

Classes

Class	Class Insignia	B'ground Colour	Finish Time Limit	Mark 1 Time Limit	Finish Window	Target Time
Techno 293 and Techno 293 Plus	Techno	White	40	10	10	20
iQFOiL, WindFoil	Black	Yellow	30	10	10	20
470	470	Blue	60	25	15	40
420	420	White	60	25	15	40
Tasar	Tasar	White	60	25	15	40
2.4mR	2.4Mr	White	60	25	15	40
Hansa 303	Hansa	White	60	25	15	40
Liberty	Liberty	Purple	60	25	15	40
RS100	RS100	Yellow White	60	25	15	40

Description of Marks

		Change Mark
Start W pin	Orange buoy or Race vessel	
Finish W pin	Black White check buoy	
Start/Finish S pin	Yellow buoy	
Mark 1i	Yellow buoy	Yellow buoy with black band
Mark 1o	Orange buoy	Orange buoy with black band
Mark 1a	Blue buoy	
Marks 4P & 4S	Yellow buoy	
Mark 5	Yellow buoy	Yellow buoy with black band

Courses

iQFOiL / WindFoil

Signal	Mark Rounding Order
W2	Start W – 1o – 1a – 4S/4P – 1o – 1a – 4P – Finish W
W3	Start W – 1o – 1a – 4 – 1o – 1a – 4 – 1o – 1a – 4P – Finish W
S2	Start S – 5 – S/F (stbd) – 5 – Finish S
S3	Start S – 5 – S/F (stbd) – 5 – S/F (stbd) – 5 – Finish S

Techno 293 & Techno 293 Plus

Signal	Mark Rounding Order
W2	Start W – 1i – 4S/4P – 1i – 4P – Finish W
W3	Start W – 1i – 4S/4P – 1i – 4S/4P – 1i – 4P Finish W
S2	Start S – 5 – S/F (stbd) – 5 – Finish S
S3	Start S – 5 – S/F (stbd) – 5 – S/F (stbd) – 5 – Finish S

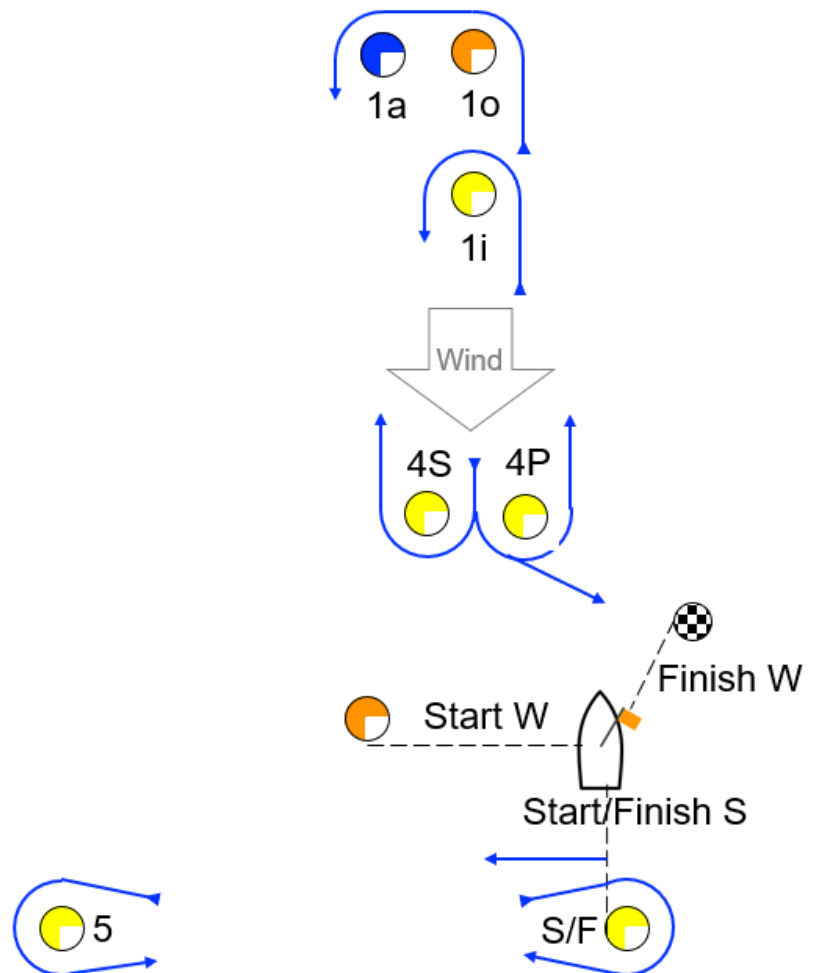
ECHO Course – VHF 72

2.4, Hansa & Liberty

Signal	Mark Rounding order
LR2	Start W – 1i – 4S/4P – 1i – 4P – Finish W
LR3	Start W – 1i – 4S/4P – 1i – 4S/4P – 1i – 4P – Finish W

470, 420, Tasar, Finn & RS100

Signal	Mark Rounding order
LR2	Start W – 1o – 1a – 4S/4P – 1o – 1a – 4P – Finish W
LR3	Start W – 1o – 1a – 4S/4P – 1o – 1a – 4S/4P – 1o – 1a – 4P – Finish W



SI Addendum D

FOXTROT Course – VHF 73

Classes

Class	Class Insignia	B'ground Colour	Finish Time Limit	Mark 1 Time Limit	Finish Window	Target Time
IKA Kitefoils	Kite	White	20	10	10	10
WingFoils	White	Red	25	10	10	12

Description of Marks

IKA KiteFoil

Start pin	Orange buoy
Finish pin	Black White check buoy
Mark 1	Pink buoy
Marks 4P & 4S	Pink buoy

WingFoil

Start/Finish pin	Blue buoy
Mark A, B, C	Orange buoy

Courses

IKA KiteFoils

Signal	Mark Rounding order
LR2	Start – 1 – 4S/4P – 1 – 4P – Finish LR
LR3	Start – 1 – 4S/4P – 1 – 4S/4P – 1 – 4P – Finish LR

WingFoils

Signal	Mark Rounding order
L2	Start – A – B – S/F – B – Finish L&S
L3	Start – A – B – S/F – B – S/F – B – Finish L&S
S2	Start – A – C – S/F – A – C – Finish L&S
S3	Start – A – C – S/F – A – C – S/F – A – C – Finish L&S

